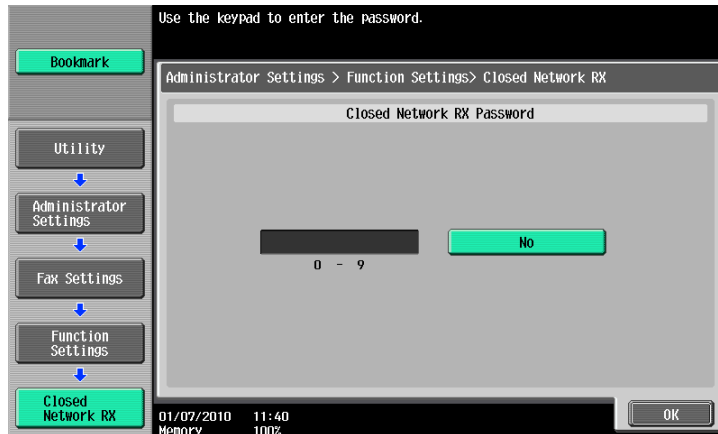


### Closed Network RX

Specify whether to use the Closed Network RX function. To use the function, specify a password that is used for Closed Network RX.

Press [No] to clear the entered setting and then specify a password using the keypad. (up to 4 digits)



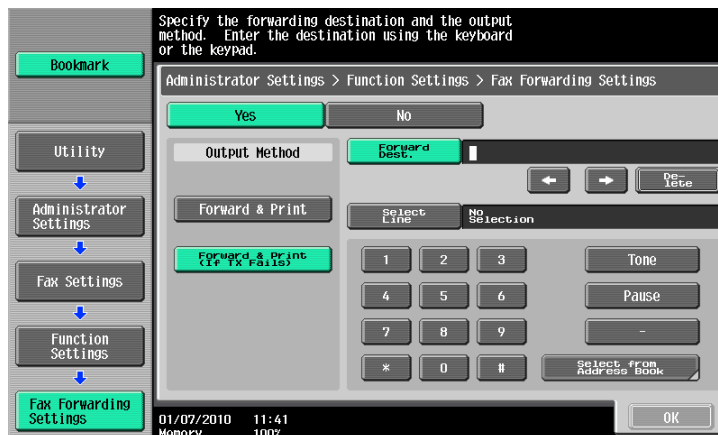
Reference

- Closed Network RX is only available when the receiver has password transmission function.

### Forward TX Setting

You can forward received documents to a preset recipient.

To receive data with the G3 fax function, if two units of **Fax Kit FK-508** are installed, and [Individual Receiving Line Setup] is set to [ON] in Administrator Settings, you can select either [Fax Line 1] or [Fax Line 2] to specify the forward destination setting for each receiving line. For details on [Individual Receiving Line Setup], refer to page 10-19.



Item	Description
[Output Method]	[Forward & Print]: Received document are forwarded and printed on this machine. [Forward & Print (If TX Fails)]: Received documents are forwarded and, if forwarding fails, are printed on the machine.
[Forward Dest.]	Allows you to enter a fax number using up to 38 digits. It is also possible to select it from the address book.
[Select Line]	If two units of <b>Fax Kit FK-508</b> are installed, specify the line used to forward received faxes.

The following items are not available if Forward TX Setting is configured.

- PC-Fax RX Settings
- TSI User Box Settings
- Memory RX Setting